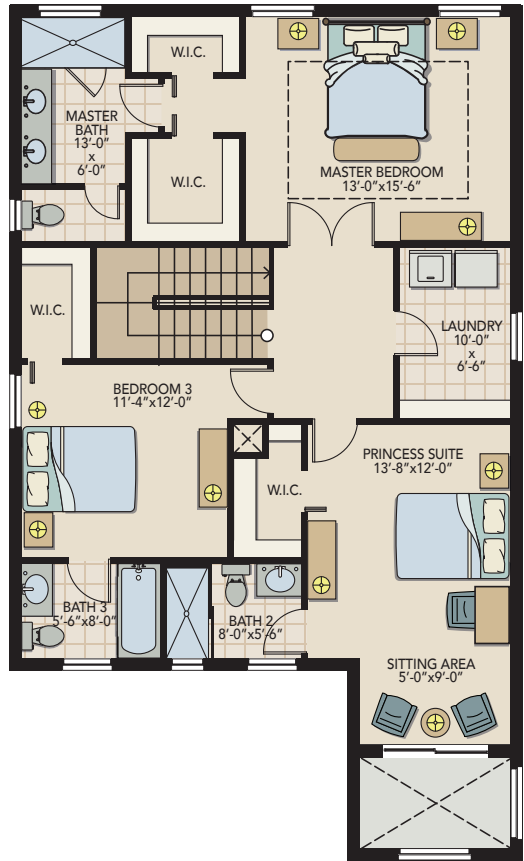
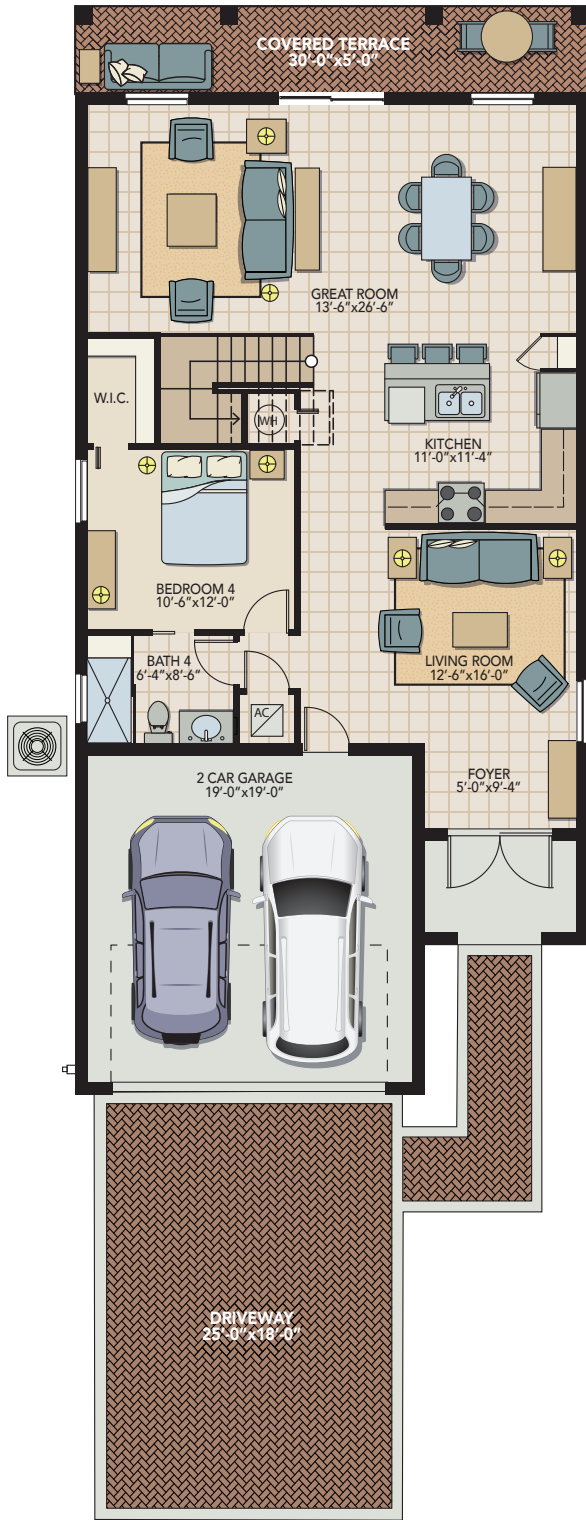


THE GRAYTON

4 Bedrooms | 4 Bathrooms | 2 Car Garage
 2,369 Sq. Ft. (A/C) • 2,923 Sq. Ft. Total



First Floor

Second Floor

954.556.6754 | 13thFloorHomes.com/ManorParc

Prices, terms, promotions, features, options, amenities, floor plans, elevations, designs, materials, square footages, association fees, and descriptions are subject to change without notice. Prices shown refer to the base house and do not include any optional features, upgrades, lot premiums, upgrade exterior elevations, or association fees. Square footages are approximate and may vary in construction depending on the standard measurement used. 13th Floor Homes, Spl South Holdings, LLC., its affiliates and advisors reserves the right to make changes to its home designs. Any energy savings, community or neighborhood benefits, features, description, open spaces, views, conservation areas, golf course, and school information are not guaranteed, are subject to change, or modified at any time.

